



Shavano Chalet Floor Plans

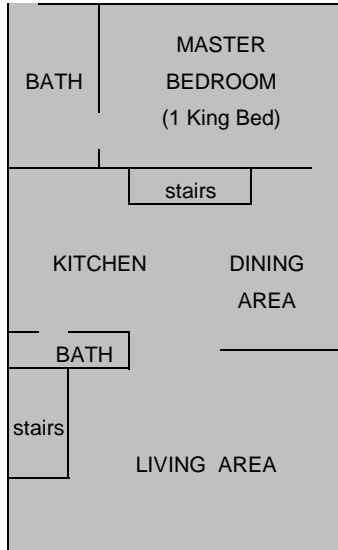


Shavano Chalet

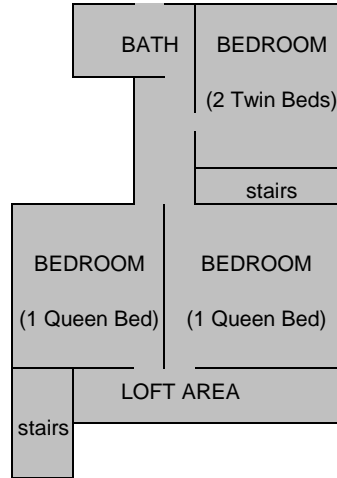
The Shavano Chalet is the largest Chalet. It can sleep up to **10** people, or can accommodate 4 couples.

The Ground Floor Living Area also serves as a small group meeting area.

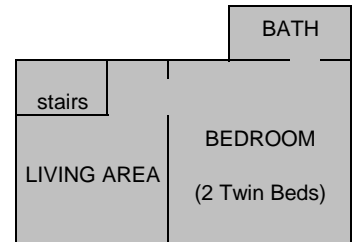
The downstairs level can be made into a private living area.



GROUND FLOOR



UPSTAIRS



DOWNSTAIRS